



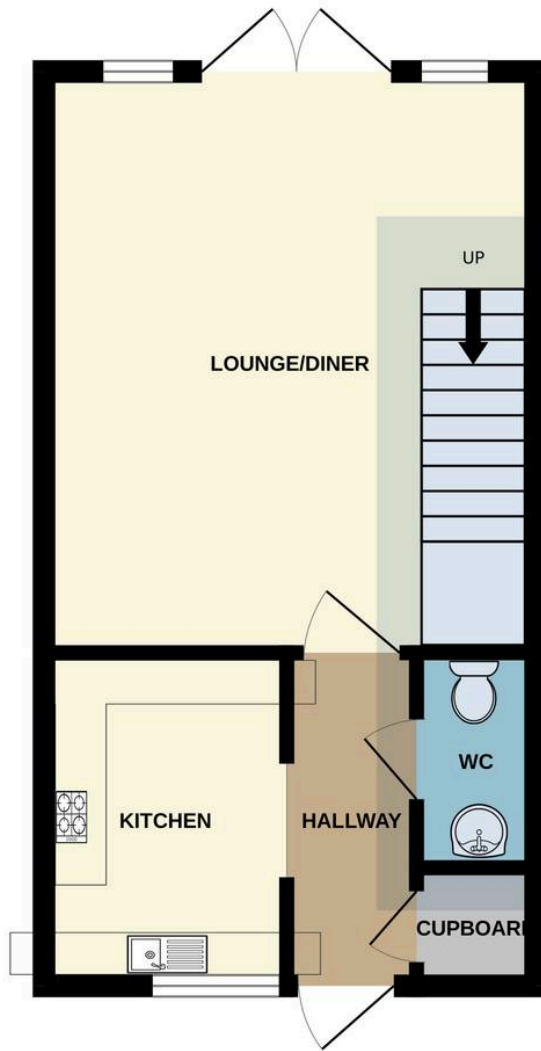
3 Highfield Road, Barry

Barry

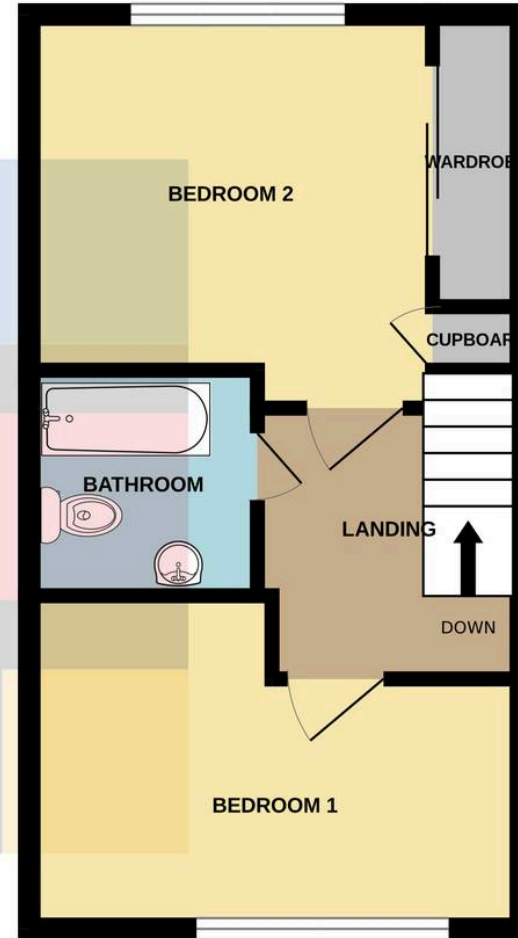
£350,000



GROUND FLOOR
305 sq.ft. (28.3 sq.m.) approx.



1ST FLOOR
305 sq.ft. (28.3 sq.m.) approx.



TOTAL FLOOR AREA : 609 sq.ft. (56.6 sq.m.) approx.

Whilst every attempt has been made to ensure the accuracy of the floorplan contained here, measurements of doors, windows, rooms and any other items are approximate and no responsibility is taken for any error, omission or mis-statement. This plan is for illustrative purposes only and should be used as such by any prospective purchaser. The services, systems and appliances shown have not been tested and no guarantee as to their operability or efficiency can be given.
Made with Metropix ©2026



Cardiff

275 Bledlow Close, Morristurt - M28 7HB

01619999999 • mgysandbox@example.com • example.com